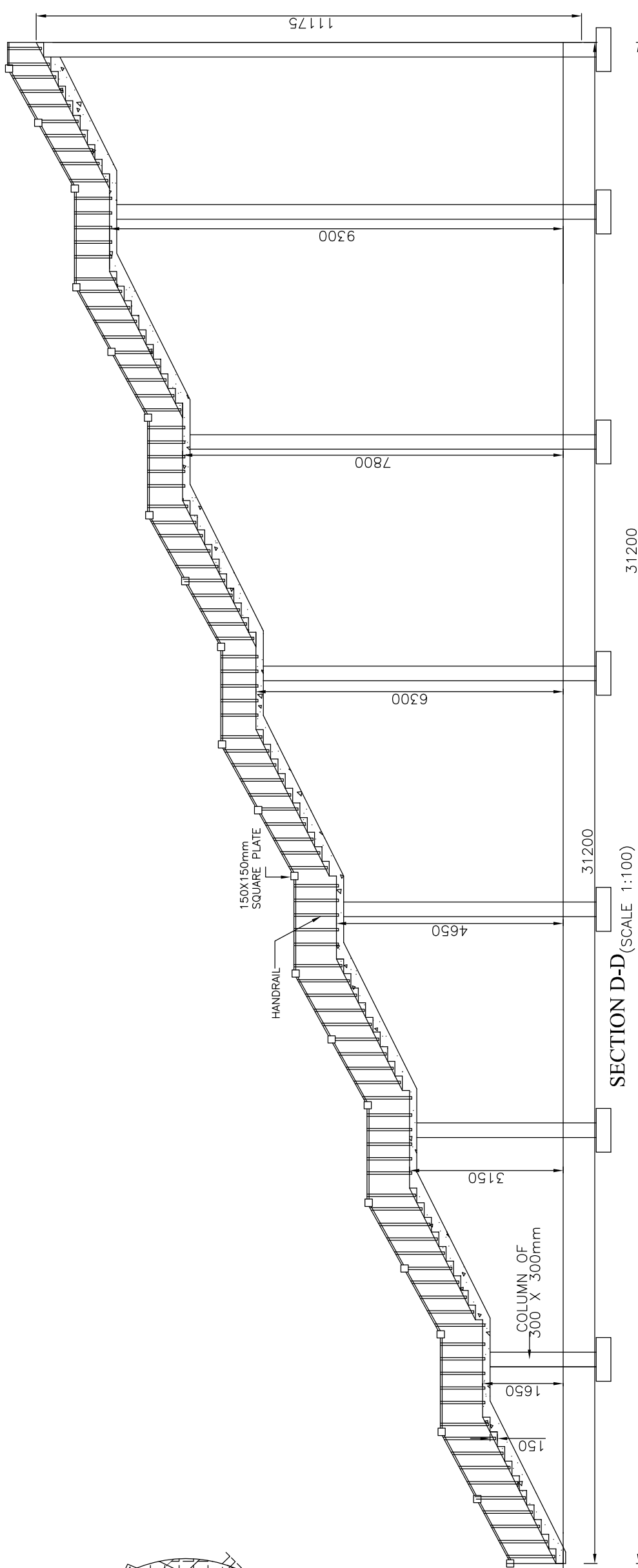
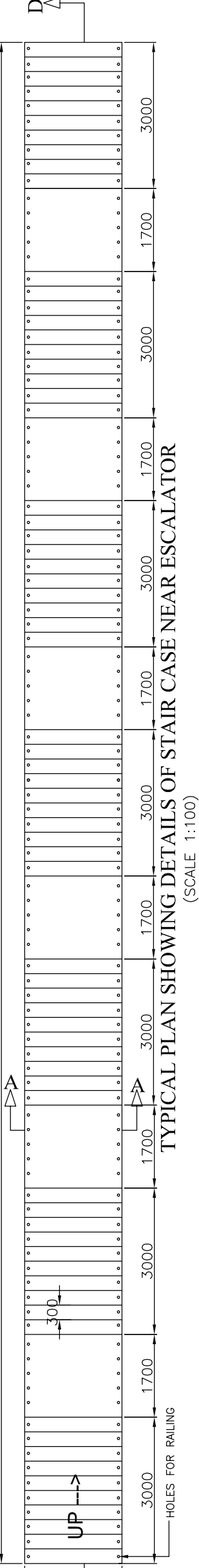


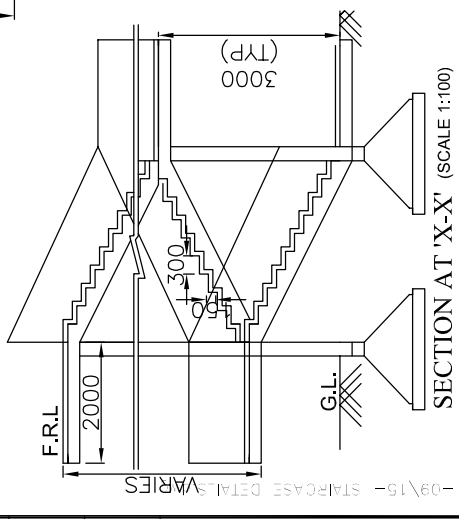
KEY PLAN



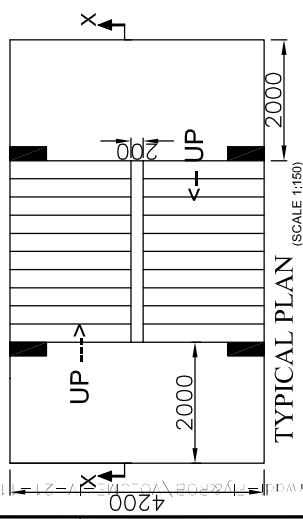
SECTION D-D (SCALE 1:100)



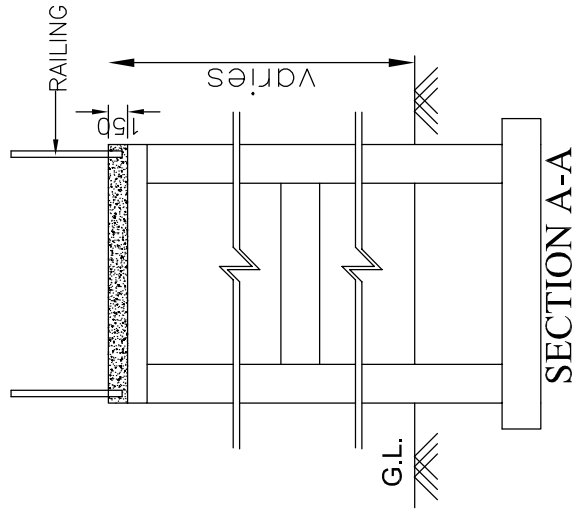
TYPICAL PLAN SHOWING DETAILS OF STAIR CASE NEAR ESCALATOR (SCALE 1:100)



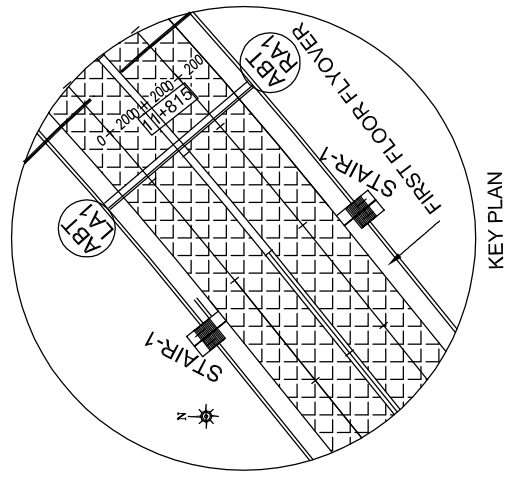
SECTION AT 'X-X' (SCALE 1:100)



TYPICAL PLAN (SCALE 1:50)



SECTION A-A



KEY PLAN

REFERENCE DRAWINGS (REFER LATEST REVISION):-

ALIGNMENT PLAN DRAWING ----- DRG.NO.2005191/ALIGNMENT PLAN-001 (LATEST REVISION)

NOTES:

1. ALL DIMENSIONS ARE IN MILLIMETERS UNLESS OTHERWISE MENTIONED. ONLY WRITTEN DIMENSIONS ARE TO BE FOLLOWED.
2. SOIL DENSITY ON THE BACKFILL AND EARTH CUSHION SHOULD CONFIRM TO CLAUSE 305.2.1.5 OF MOST SPECIFICATION.
3. SAFE BEARING CAPACITY REQUIRED SHALL BE 15 T/SQM. FOUNDING LEVEL IS TOP OF LEVELLING COURSE. ALL UNDULATIONS IN THE EXCAVATED ROCK LEVEL SHALL BE MADE UP WITH PCC M15 TO GIVE AVERAGE 150MM THICKNESS.
4. USE M-25 GRADE CONCRETE & H.Y.S.D. Fe-415 CONFIRMING TO IS:1786-1979

CITY ENGINEER

PIMPRI CHINCHWAD MUNICIPAL CORPORATION
PIMPRI, PUNE - 411 018.

EXECUTIVE ENGINEER (PROJECTS)

PIMPRI CHINCHWAD MUNICIPAL CORPORATION
PIMPRI, PUNE - 411 018.

CONSULTANT:-
CONSULTING ENGINEERING SERVICES (I) PVT LTD
41-A, MAKER TOWER, 'E', CUFFE PARADE, MUMBAI-400 005.
E-mail: cesmb@vsnl.com Web: www.cesinter.com
PUNE OFFICE: TEL: 020-25434626 e-mail: cespune@vsnl.com
MUMBAI PUNE NEW DELHI KOLKATA

CLIENT:-
PIMPRI CHINCHWAD MUNICIPAL CORPORATION
PIMPRI
PUNE - 411 018.
PH.: +91 -20-27425511 FAX: +91 -20-27425600
E-mail: pcmc@vsnl.com Web: www.pcmc.org

NAME OF WORK:
**DESIGN AND CONSTRUCTION OF FLYOVER AND
ROB AT NASHIK PHATA ON OLD MUMBAI PUNE
NH-4 INCLUDING BRIDGE ON RIVER PAWANA.**

TITLE:
**GENERAL ARRANGEMENT DRAWING
FOR STAIRCASES OF FLYOVER**

DRG.NO:2005191/STAIRCASE -015

REVISION NO: RO DATE: 26-12-07

DRAWN BY(A) DESIGN(B) CHECKED (C) APPROVED (D)

RUPALI CHAVAN N.A.SURYAWANSHI D.B.JOTAWAR M.K.GANGIL

PURPOSE

FOR

TENDER

REV	DATE	DESCRIPTION OF REVISION	A	B	C	INITIALS
R-1	21.11.08	FOR TENDER PURPOSE				
R-0	26.12.07	FOR TENDER PURPOSE				